

DUBAI HILLS
ESTATE

LIME GARDENS

2 BEDROOM DUPLEX TYPE 1

GROUND LEVEL |

UNIT 01

SUITE AREA	1568.41 SQ.FT.	145.71 SQ.M.
BALCONY AREA	400.10 SQ.FT.	37.17 SQ.M.
TOTAL AREA	1968.51 SQ.FT.	182.88 SQ.M.

KEY PLAN
GROUND LEVEL

PARK SIDE

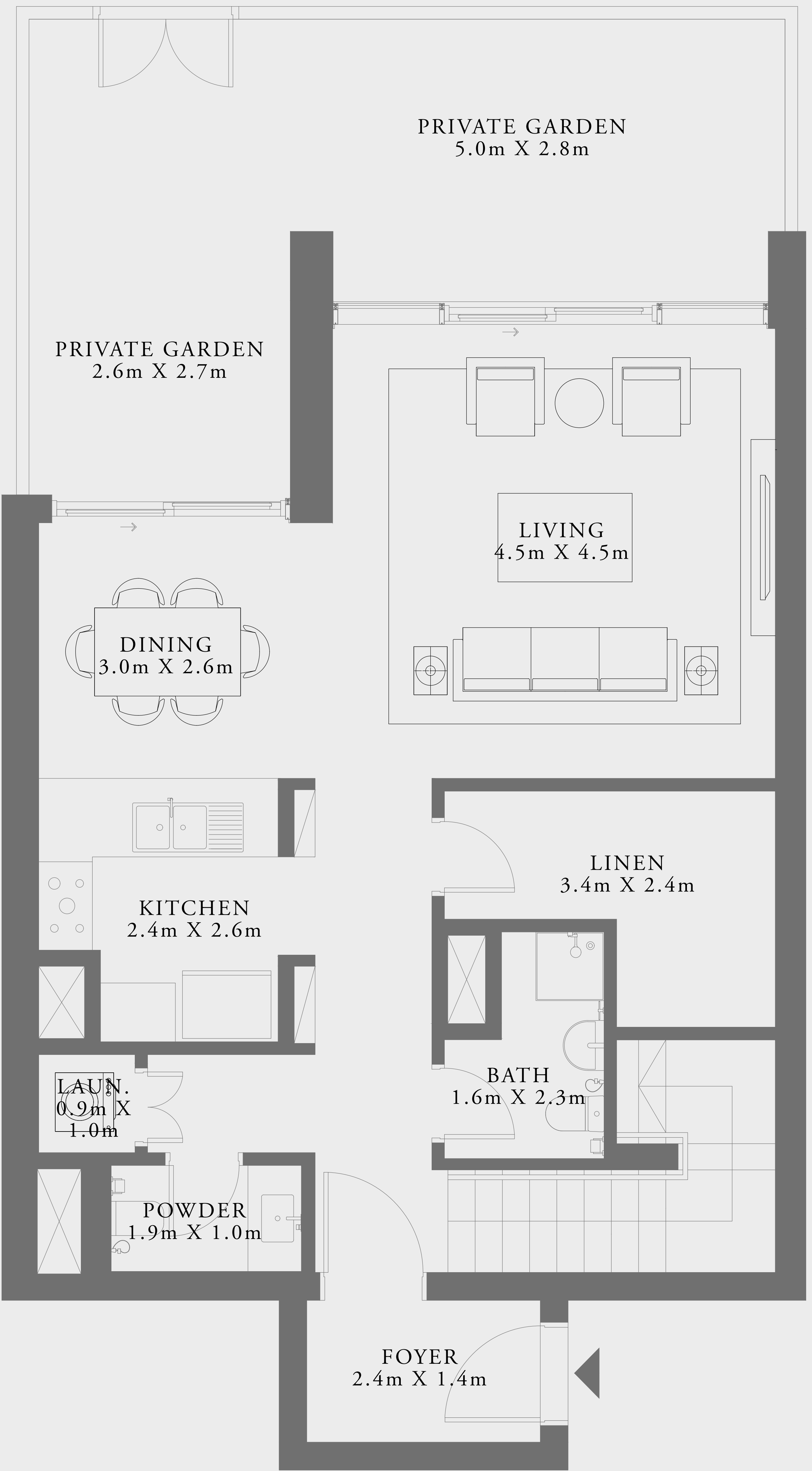
G01G02G03G04G05G06G07G08G09

KEY SECTION

P
G

BOULEVARD

N



LOWER LEVEL



UPPER LEVEL

Disclaimer : All dimensions are in imperial and metric, and measured from finish to finish excluding construction tolerances. 2. All materials, dimensions, and drawings are approximate only. 3. Information is subject to change with at developer's absolute discretion. 4. Actual area may vary from the stated area. 5. Drawings not to scale. 6. All images used are for illustrative purposes only and do not represent the actual size, features, specifications, fittings, and 7. The developer reserves the right to make revisions / alterations, at its absolute discretion, without any liability whatsoever.

DUBAI HILLS ESTATE

LIME GARDENS

2 BEDROOM DUPLEX TYPE 1A

GROUND LEVEL | UNITS 03, 05 & 07

SUITE AREA	1565.93 SQ.FT.	145.48 SQ.M.
BALCONY AREA	398.37 SQ.FT.	37.01 SQ.M.
TOTAL AREA	1964.30 SQ.FT.	182.49 SQ.M.

GROUND LEVEL | UNIT 09

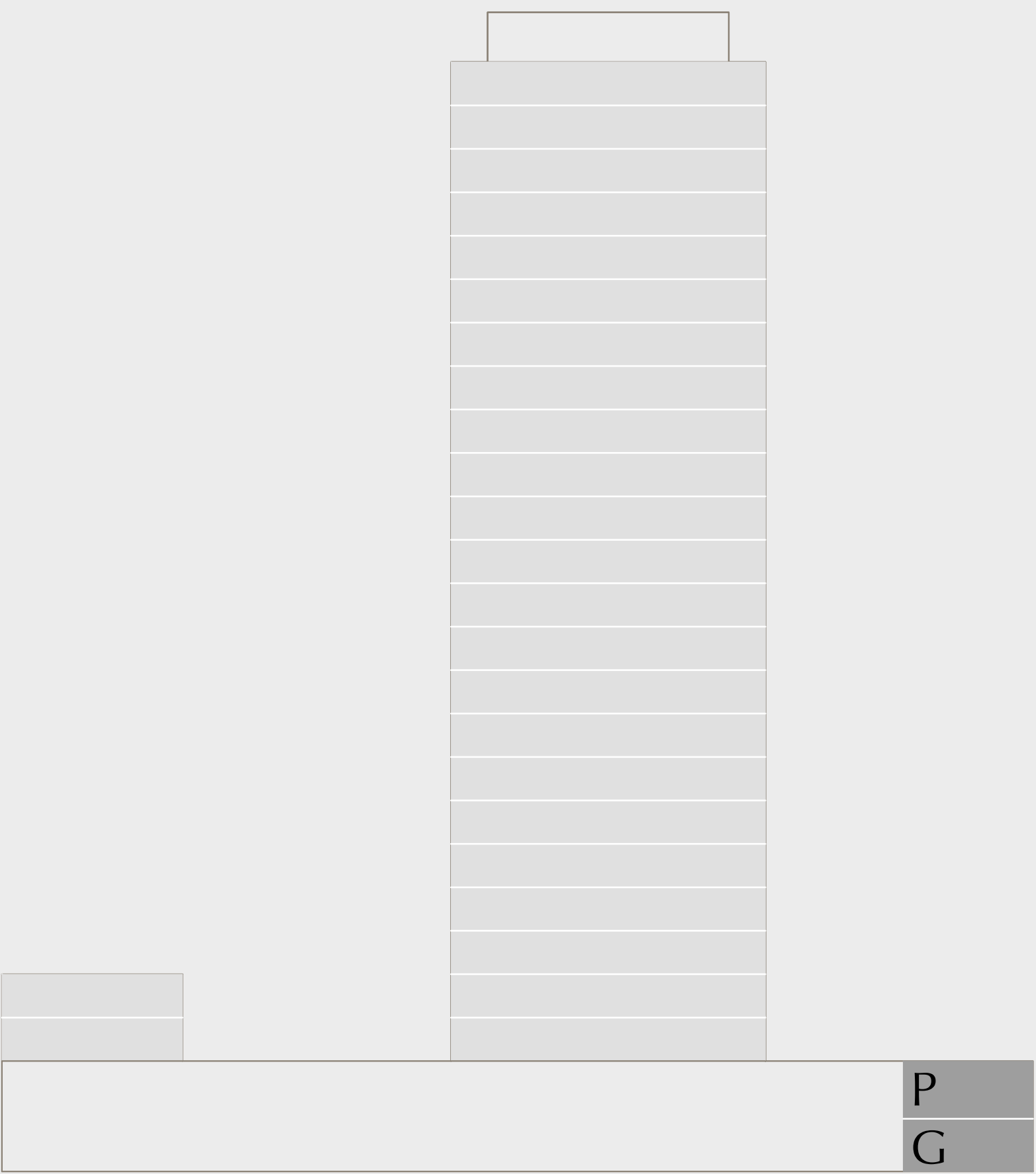
SUITE AREA	1571.00 SQ.FT.	145.95 SQ.M.
BALCONY AREA	398.37 SQ.FT.	37.01 SQ.M.
TOTAL AREA	1969.37 SQ.FT.	182.96 SQ.M.

KEY PLAN
GROUND LEVEL

PARK SIDE

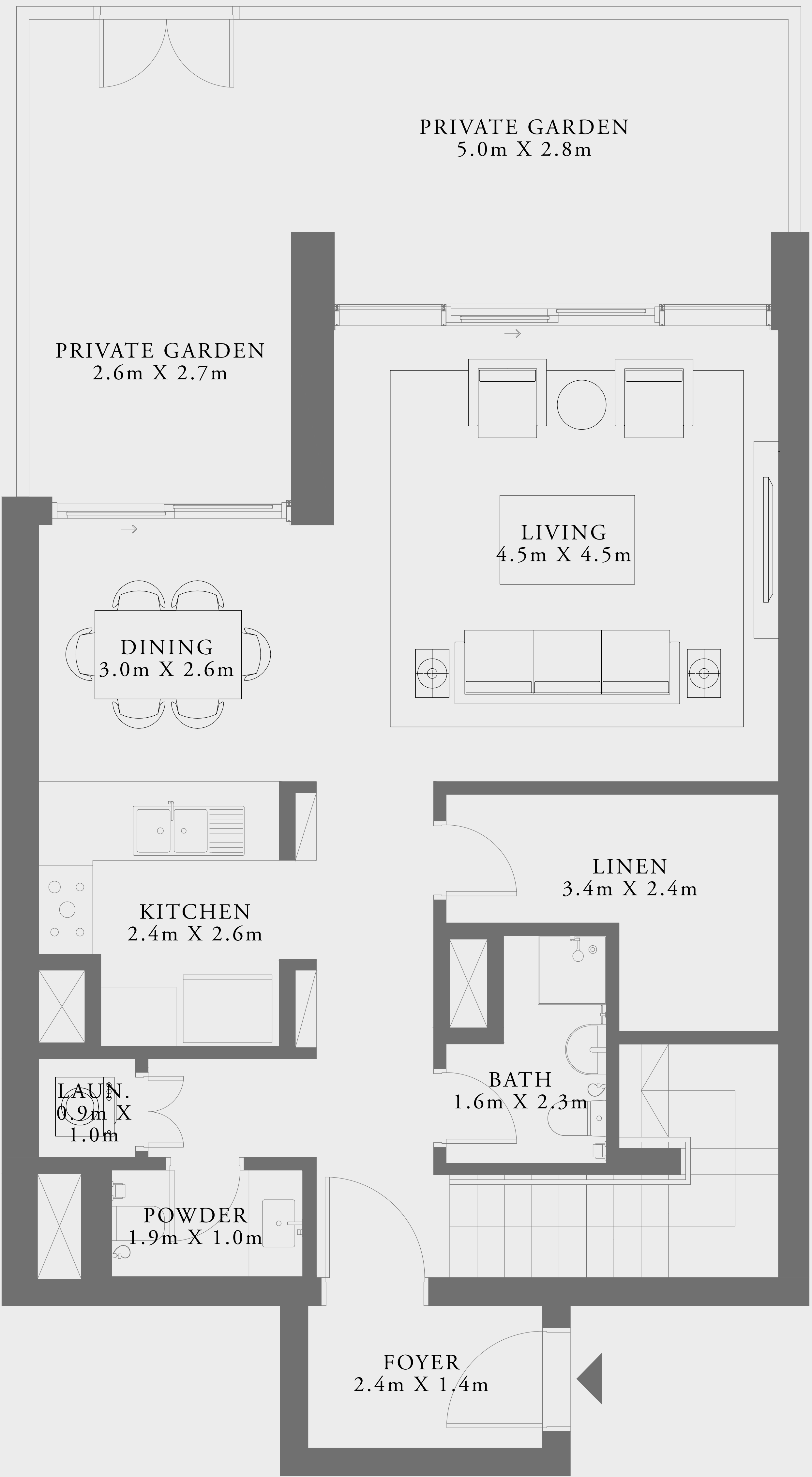
G01G02G03G04G05G06G07G08G09

KEY SECTION



BOULEVARD

N



LOWER LEVEL



UPPER LEVEL

Disclaimer : All dimensions are in imperial and metric, and measured from finish to finish excluding construction tolerances. 2. All materials, dimensions, and drawings are approximate only. 3. Information is subject to change with at developer's absolute discretion. 4. Actual area may vary from the stated area. 5. Drawings not to scale. 6. All images used are for illustrative purposes only and do not represent the actual size, features, specifications, fittings, and 7. The developer reserves the right to make revisions / alterations, at it's absolute discretion, without any liability whatsoever.

DUBAI HILLS
ESTATE

LIME GARDENS

2 BEDROOM DUPLEX TYPE 1M

GROUND LEVEL | UNITS 02, 04, 06 & 08

SUITE AREA	1565.93 SQ.FT.	145.48 SQ.M.
BALCONY AREA	398.37 SQ.FT.	37.01 SQ.M.
TOTAL AREA	1964.30 SQ.FT.	182.49 SQ.M.

KEY PLAN
GROUND LEVEL

PARK SIDE

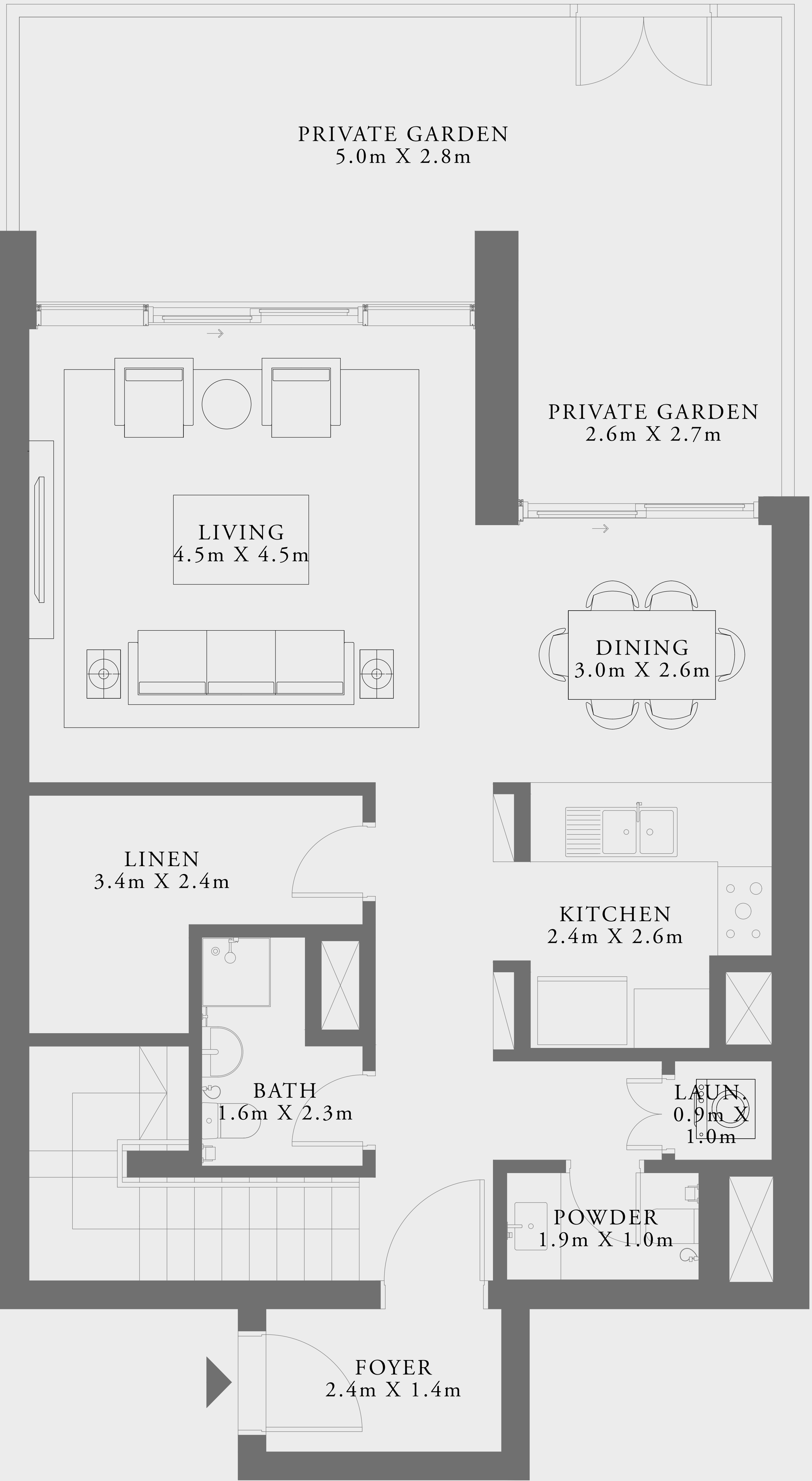
G01G02G03G04G05G06G07G08G09

KEY SECTION

P
G

BOULEVARD

N



LOWER LEVEL



UPPER LEVEL

Disclaimer : All dimensions are in imperial and metric, and measured from finish to finish excluding construction tolerances. 2. All materials, dimensions, and drawings are approximate only. 3. Information is subject to change with at developer's absolute discretion. 4. Actual area may vary from the stated area. 5. Drawings not to scale. 6. All images used are for illustrative purposes only and do not represent the actual size, features, specifications, fittings, and 7. The developer reserves the right to make revisions / alterations, at it's absolute discretion, without any liability whatsoever.

DUBAI HILLS ESTATE

LIME GARDENS

2 BEDROOM TYPE 1B

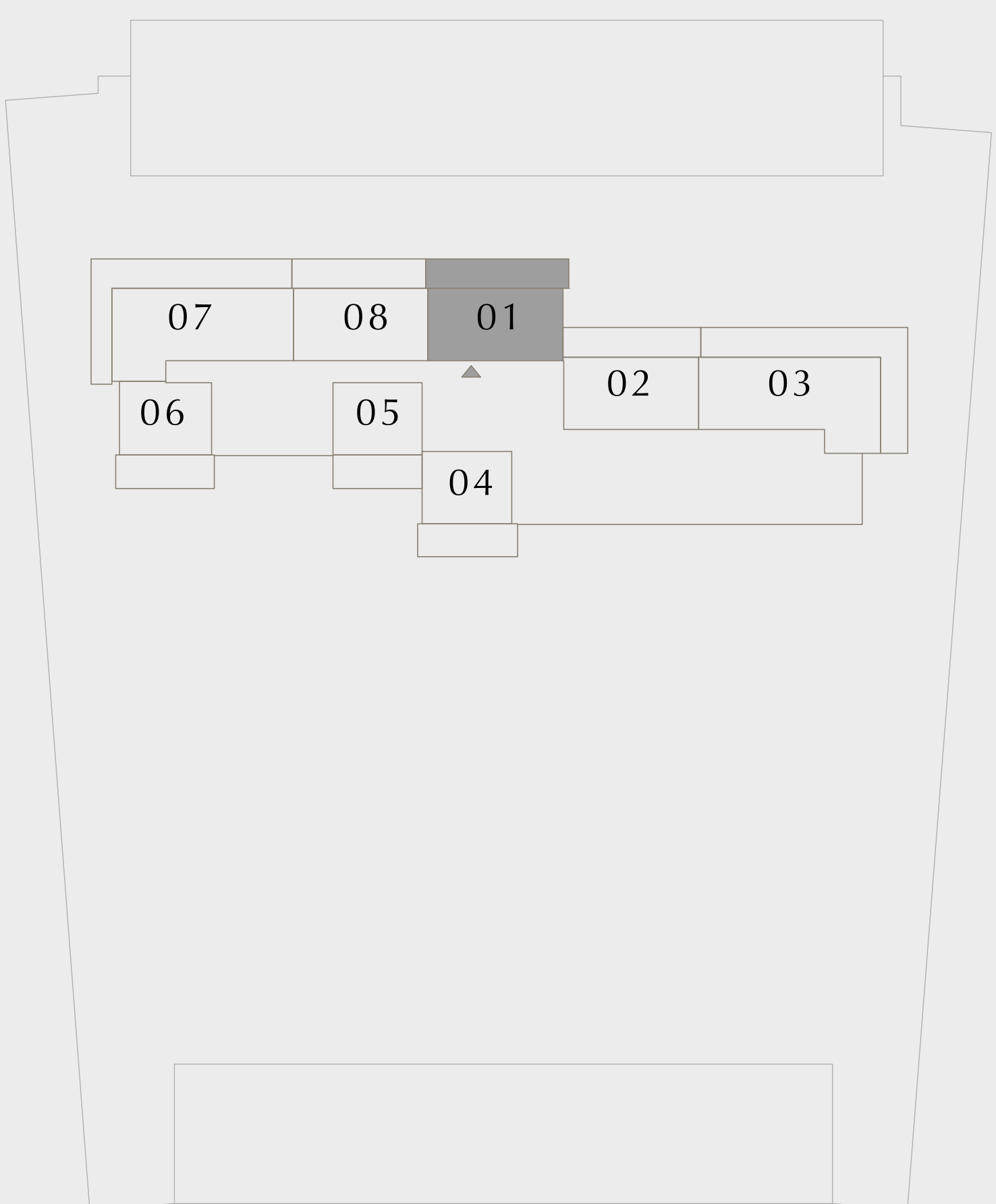
LEVEL 01 |

UNIT 01

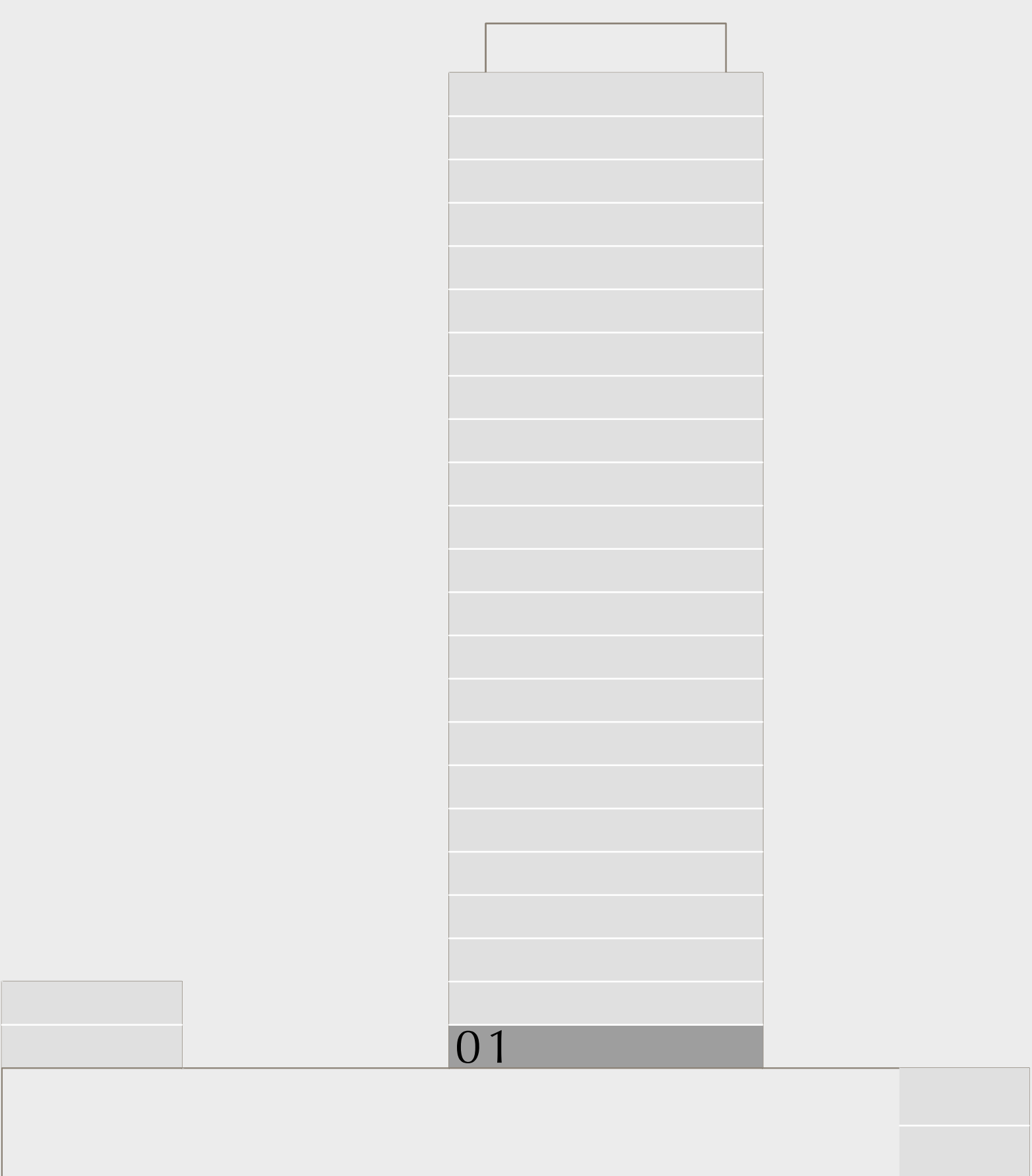
SUITE AREA	910.30 SQ.FT.	84.57 SQ.M.
BALCONY AREA	410.43 SQ.FT.	38.13 SQ.M.
TOTAL AREA	1320.73 SQ.FT.	122.70 SQ.M.

KEY PLAN
LEVEL 01

PARK SIDE



KEY SECTION



Disclaimer : All dimensions are in imperial and metric, and measured from finish to finish excluding construction tolerances. 2. All materials, dimensions, and drawings are approximate only. 3. Information is subject to change without developer's absolute discretion. 4. Actual area may vary from the stated area. 5. Drawings not to scale. 6. All images used are for illustrative purposes only and do not represent the actual size, features, specifications, fittings, and finishes. 7. The developer reserves the right to make revisions / alterations, at its absolute discretion, without any liability whatsoever.

DUBAI HILLS
ESTATE

LIME GARDENS

2 BEDROOM TYPE 1

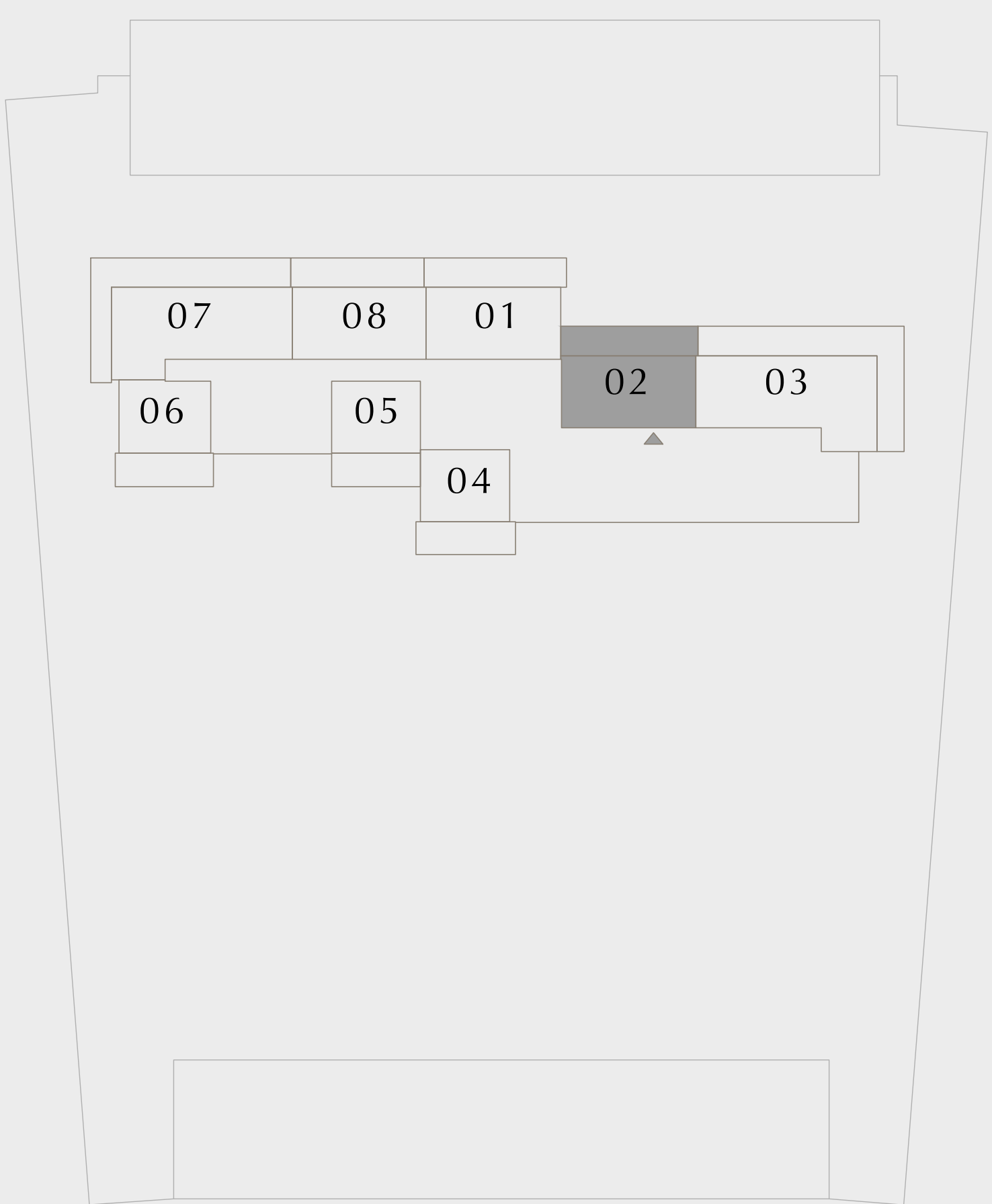
LEVEL 01 |

UNIT 02

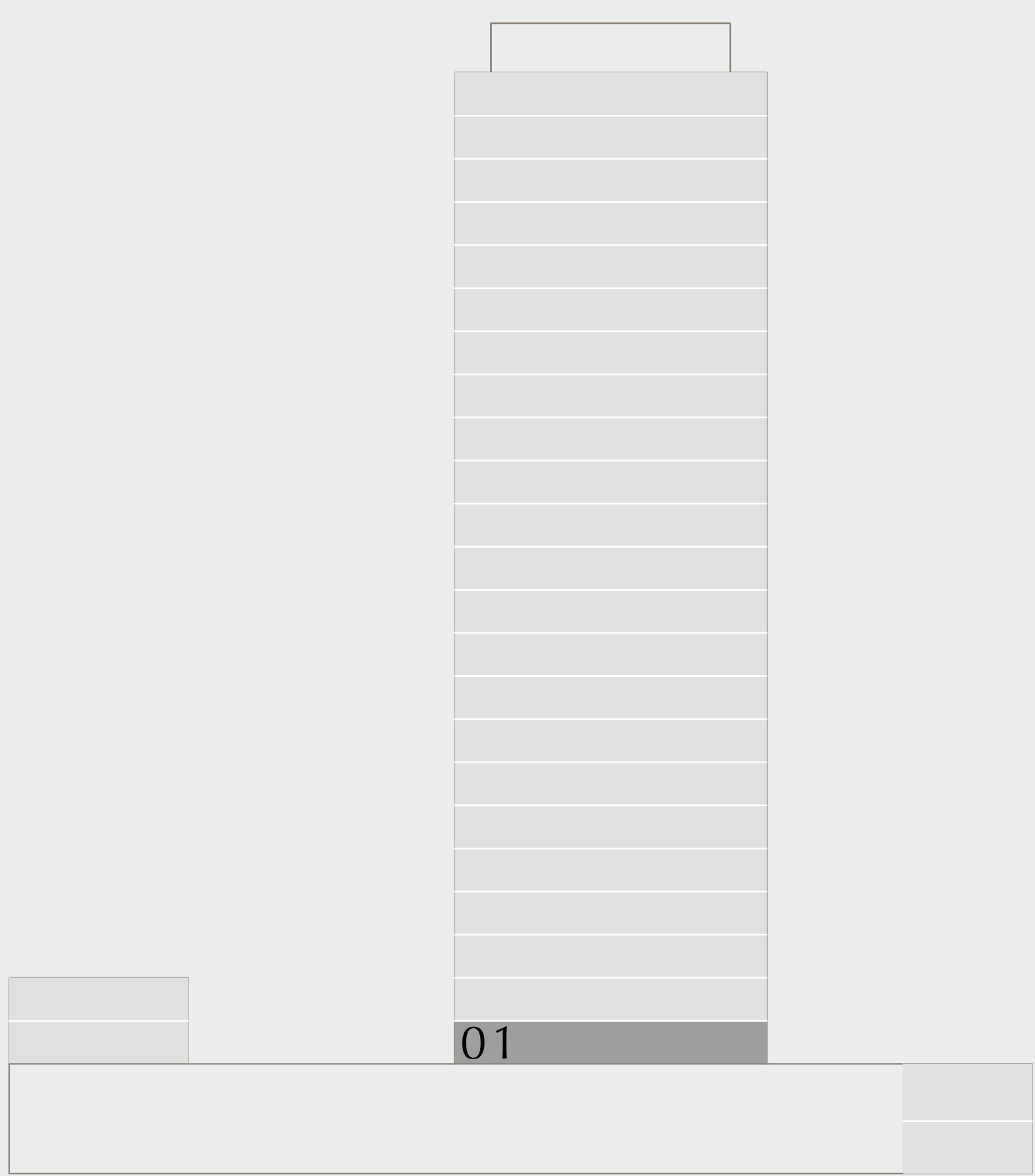
SUITE AREA	904.92 SQ.FT.	84.07 SQ.M.
BALCONY AREA	398.05 SQ.FT.	36.98 SQ.M.
TOTAL AREA	1302.97 SQ.FT.	121.05 SQ.M.

KEY PLAN
LEVEL 01

PARK SIDE



KEY SECTION



Disclaimer : All dimensions are in imperial and metric, and measured from finish to finish excluding construction tolerances. 2. All materials, dimensions, and drawings are approximate only. 3. Information is subject to change without notice at developer's absolute discretion. 4. Actual area may vary from the stated area. 5. Drawings not to scale. 6. All images used are for illustrative purposes only and do not represent the actual size, features, specifications, fittings, and finishes. 7. The developer reserves the right to make revisions / alterations, at its absolute discretion, without any liability whatsoever.

DUBAI HILLS ESTATE

LIME GARDENS

2 BEDROOM TYPE 1A

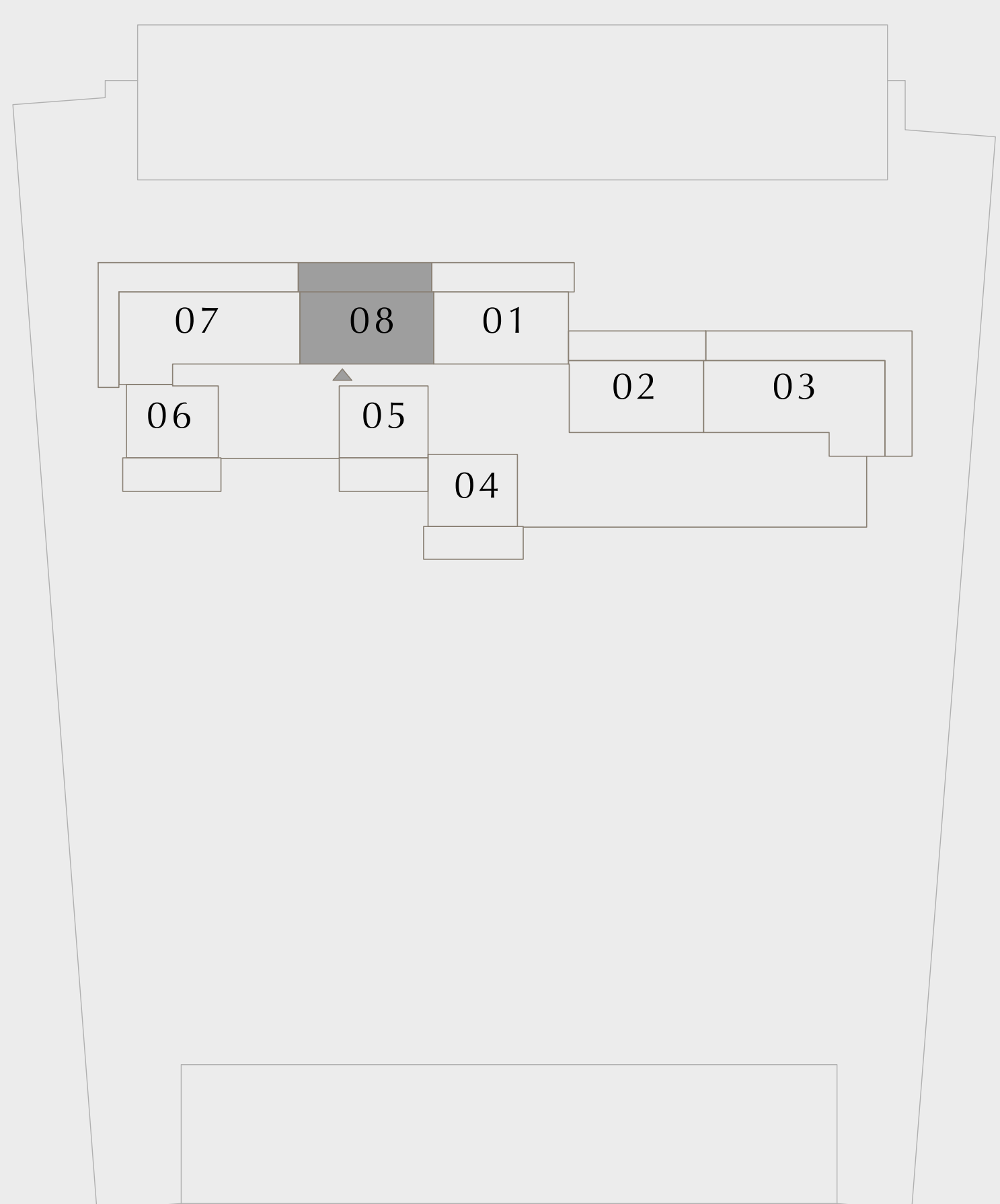
LEVEL 01 |

UNIT 08

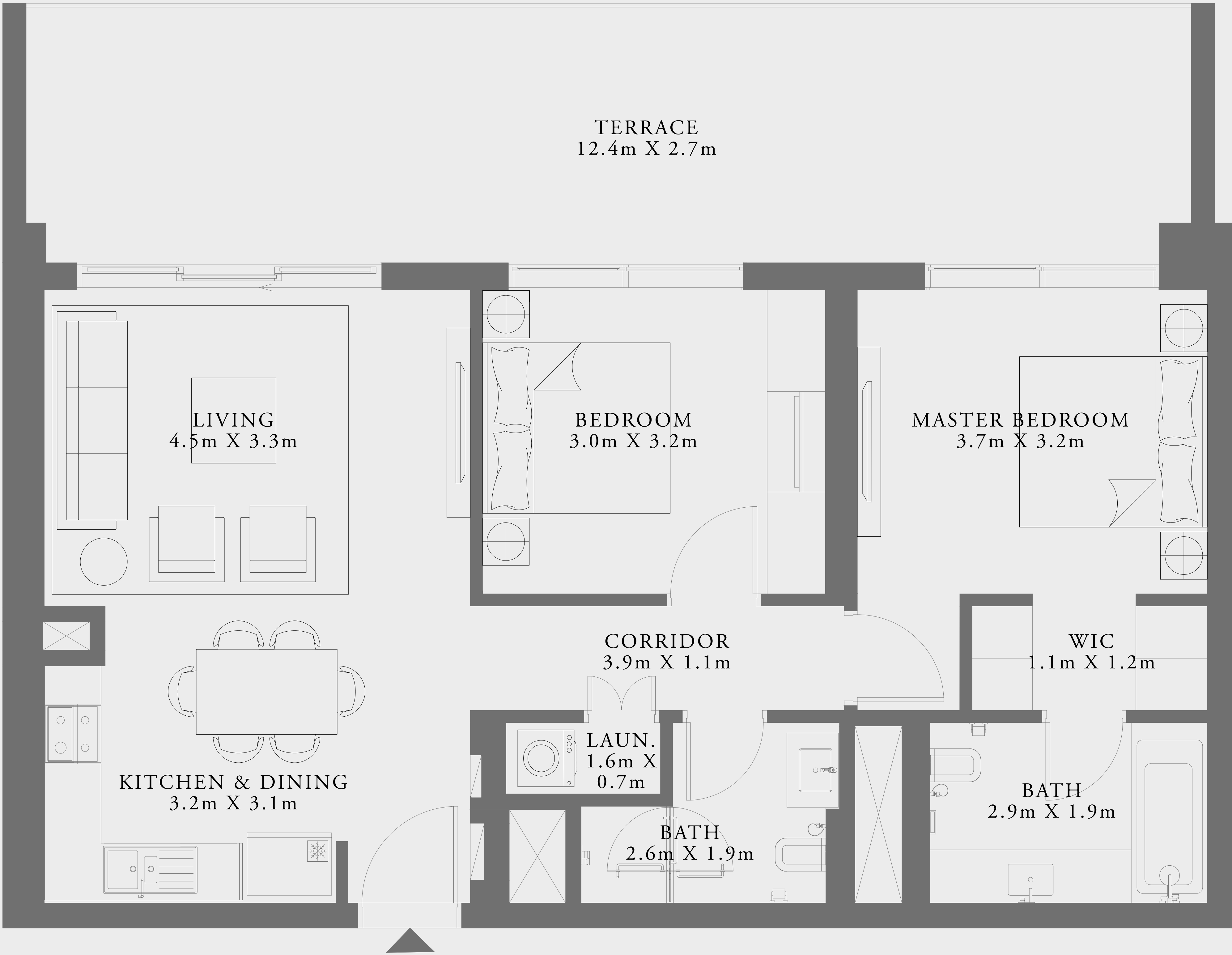
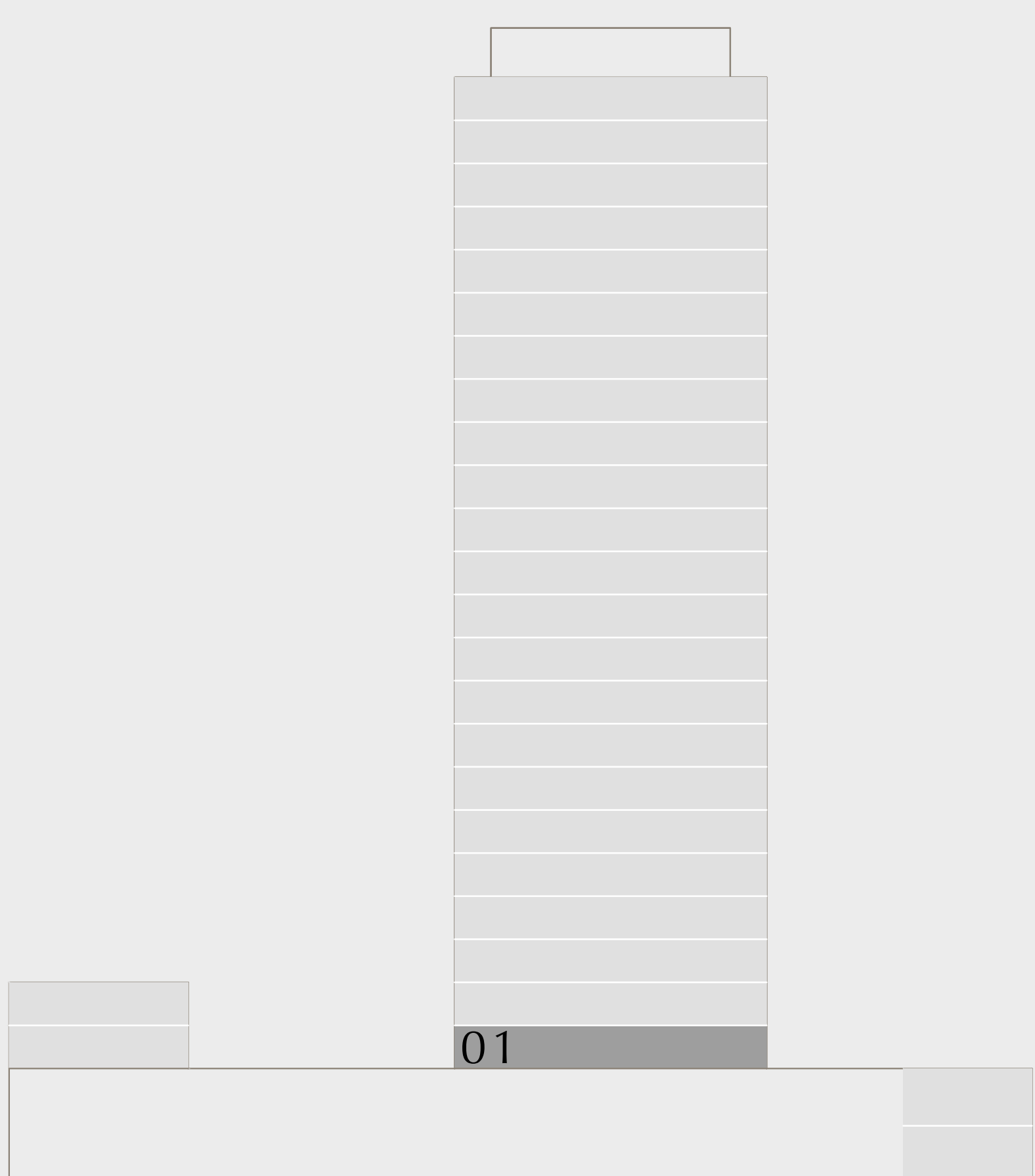
SUITE AREA	900.29 SQ.FT.	83.64 SQ.M.
BALCONY AREA	383.63 SQ.FT.	35.64 SQ.M.
TOTAL AREA	1283.92 SQ.FT.	119.28 SQ.M.

KEY PLAN
LEVEL 01

PARK SIDE



KEY SECTION



Disclaimer : All dimensions are in imperial and metric, and measured from finish to finish excluding construction tolerances. 2. All materials, dimensions, and drawings are approximate only. 3. Information is subject to change without notice at developer's absolute discretion. 4. Actual area may vary from the stated area. 5. Drawings not to scale. 6. All images used are for illustrative purposes only and do not represent the actual size, features, specifications, fittings, and finishes. 7. The developer reserves the right to make revisions / alterations, at its absolute discretion, without any liability whatsoever.

DUBAI HILLS ESTATE

LIME GARDENS

2 BEDROOM TYPE 1E

LEVELS 02-23 |

UNIT 01

SUITE AREA	910.30 SQ.FT.	84.57 SQ.M.
BALCONY AREA	53.60 SQ.FT.	4.98 SQ.M.
TOTAL AREA	963.90 SQ.FT.	89.55 SQ.M.

LEVELS 02-23 |

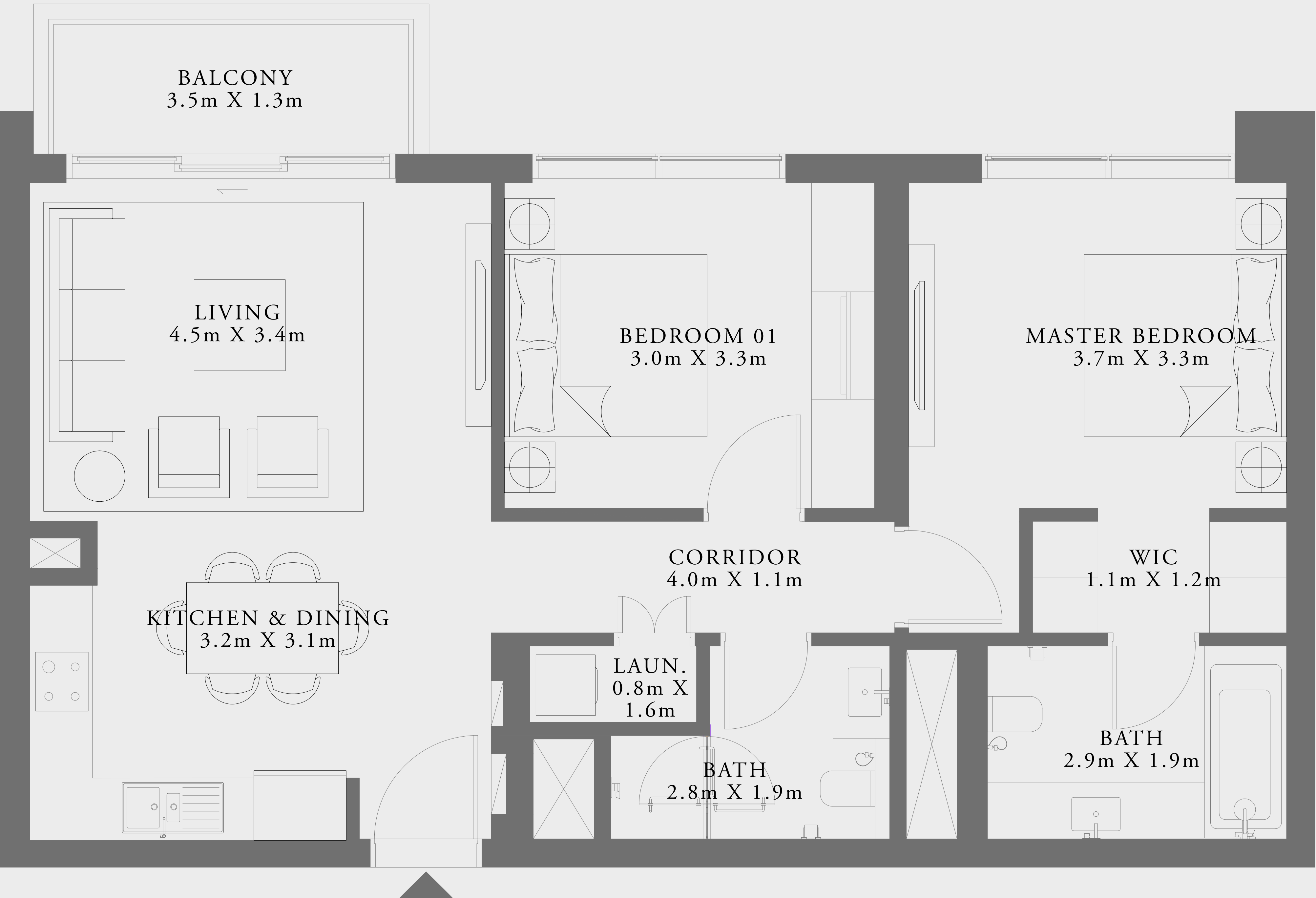
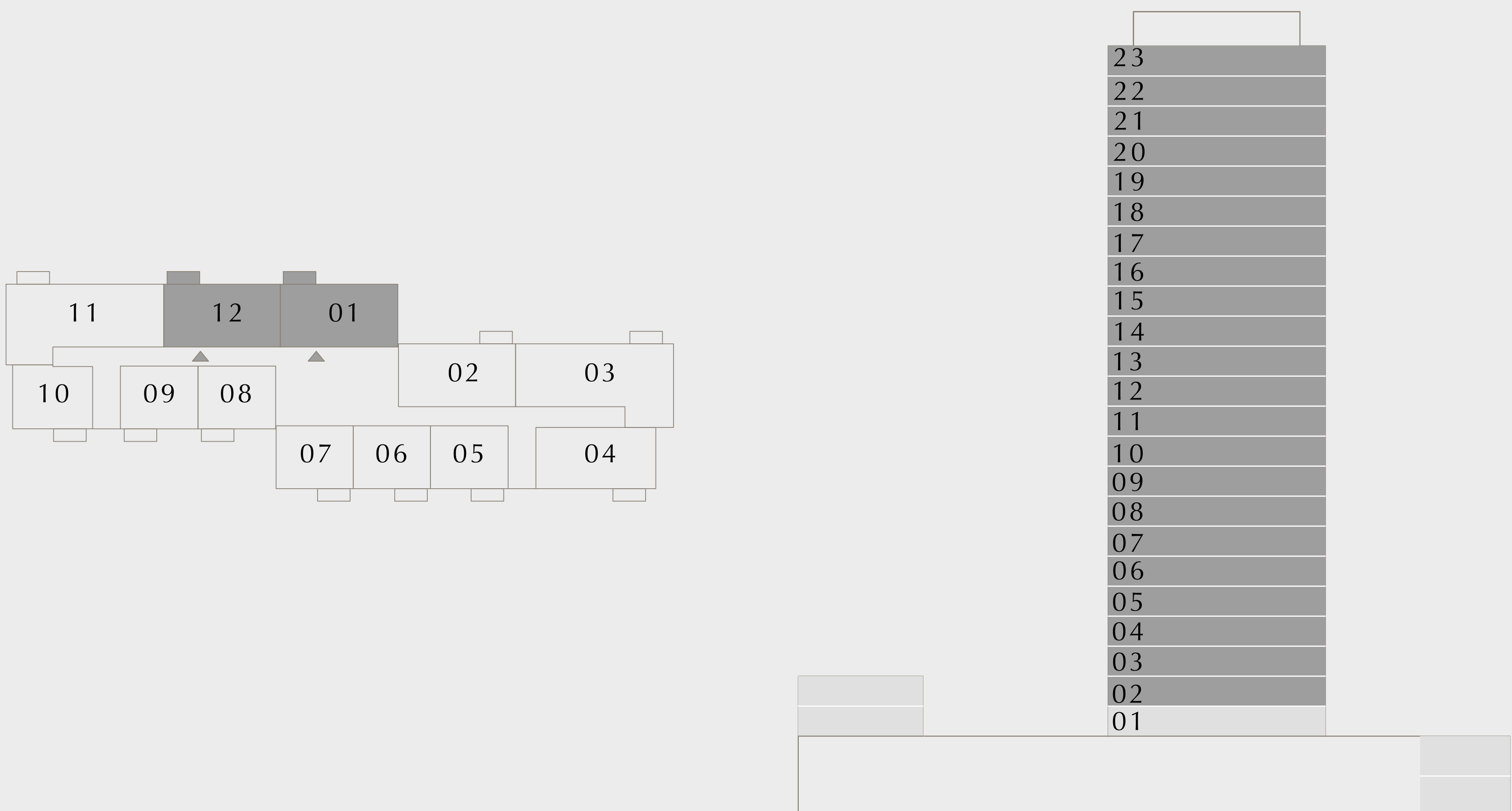
UNIT 12

SUITE AREA	900.29 SQ.FT.	83.64 SQ.M.
BALCONY AREA	53.60 SQ.FT.	4.98 SQ.M.
TOTAL AREA	953.89 SQ.FT.	88.62 SQ.M.

KEY PLAN
LEVELS 02-23

PARK SIDE

KEY SECTION



Disclaimer : All dimensions are in imperial and metric, and measured from finish to finish excluding construction tolerances. 2. All materials, dimensions, and drawings are approximate only. 3. Information is subject to change without notice at developer's absolute discretion. 4. Actual area may vary from the stated area. 5. Drawings not to scale. 6. All images used are for illustrative purposes only and do not represent the actual size, features, specifications, fittings, and finishes. 7. The developer reserves the right to make revisions / alterations, at its absolute discretion, without any liability whatsoever.

DUBAI HILLS

ESTATE

LIME GARDENS

2 BEDROOM TYPE 1C

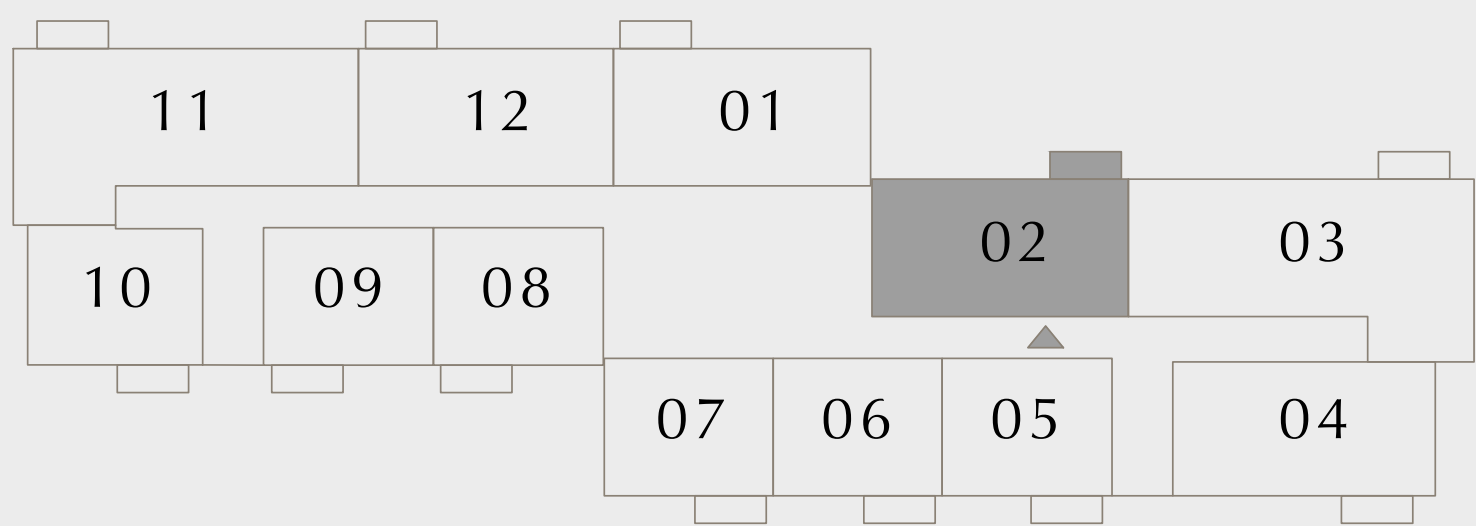
LEVELS 02-23 |

UNIT 02

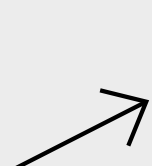
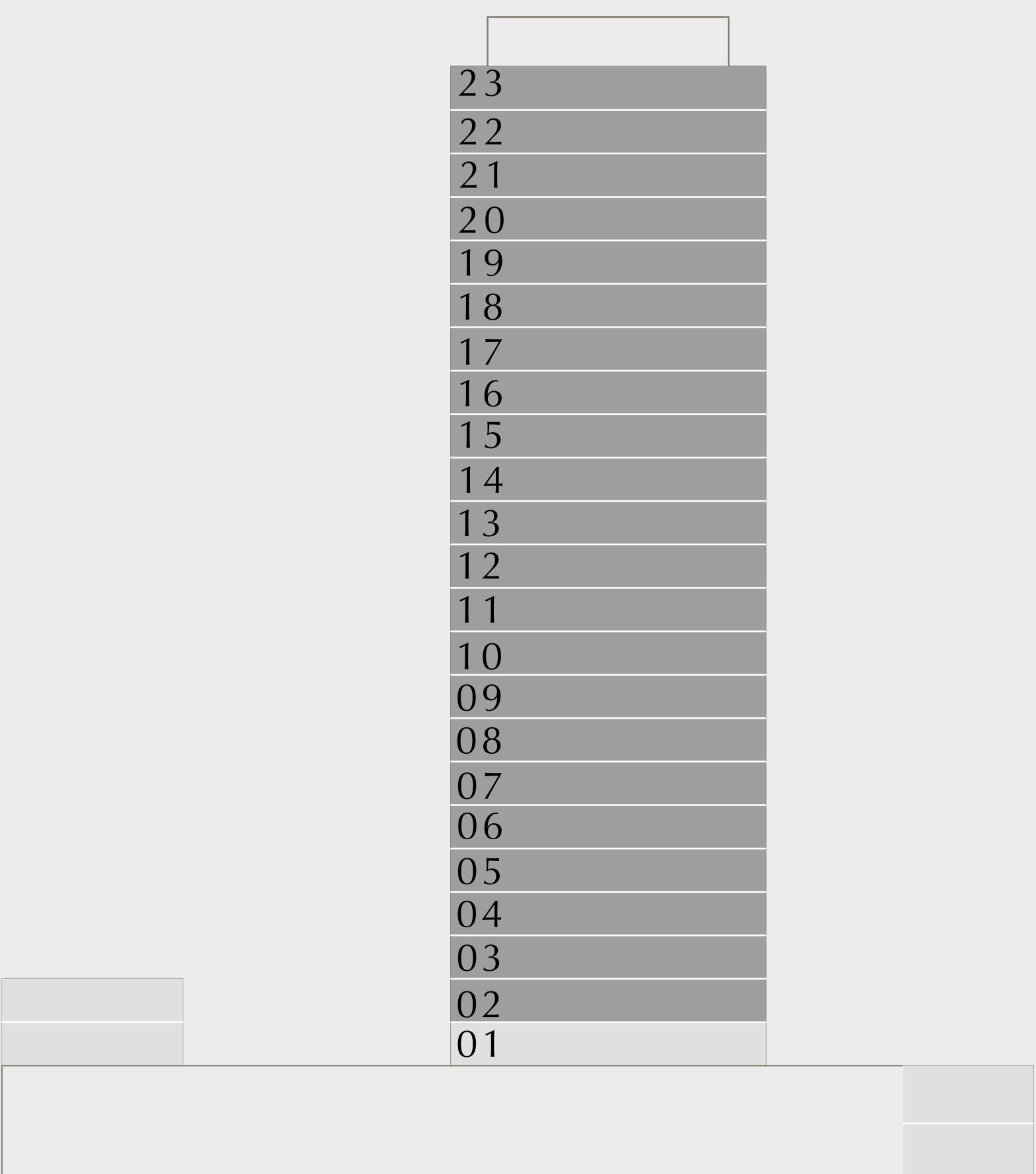
SUITE AREA	904.92 SQ.FT.	84.07 SQ.M.
BALCONY AREA	53.60 SQ.FT.	4.98 SQ.M.
TOTAL AREA	958.52 SQ.FT.	89.05 SQ.M.

KEY PLAN
LEVELS 02-23

PARK SIDE



KEY SECTION



N

BOULEVARD



Disclaimer : All dimensions are in imperial and metric, and measured from finish to finish excluding construction tolerances. 2. All materials, dimensions, and drawings are approximate only. 3. Information is subject to change without notice at developer's absolute discretion. 4. Actual area may vary from the stated area. 5. Drawings not to scale. 6. All images used are for illustrative purposes only and do not represent the actual size, features, specifications, fittings, and finishes. 7. The developer reserves the right to make revisions / alterations, at its absolute discretion, without any liability whatsoever.

DUBAI HILLS ESTATE

LIME GARDENS

2 BEDROOM TYPE 1D

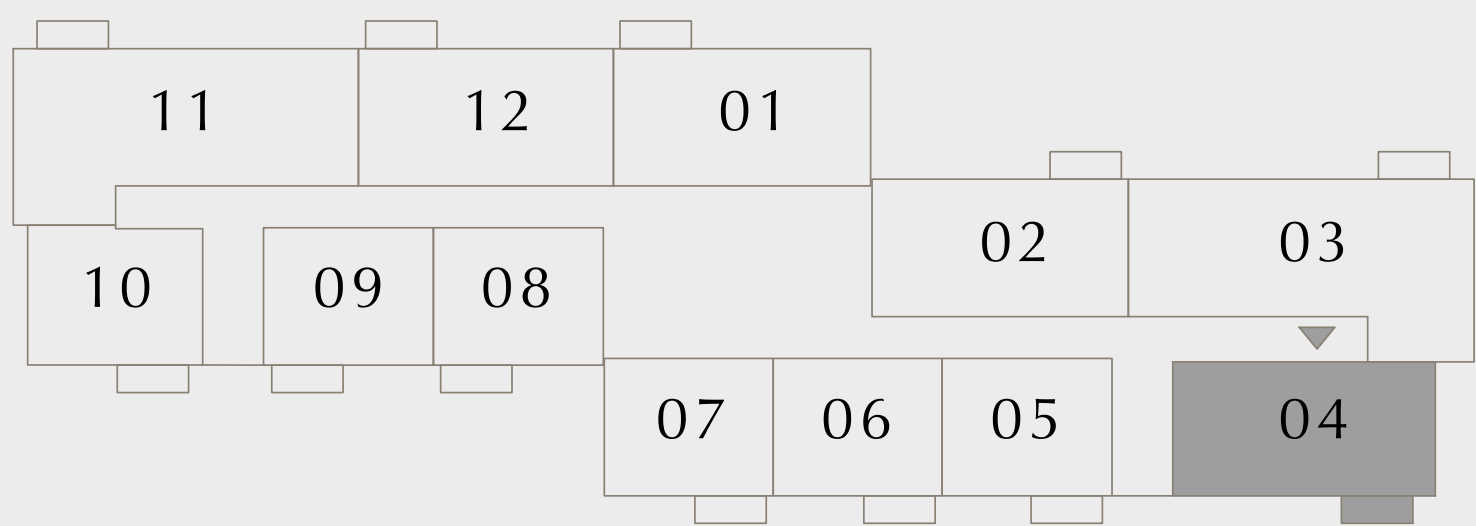
LEVELS 02-23 |

UNIT 04

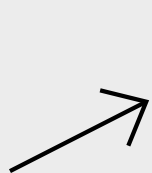
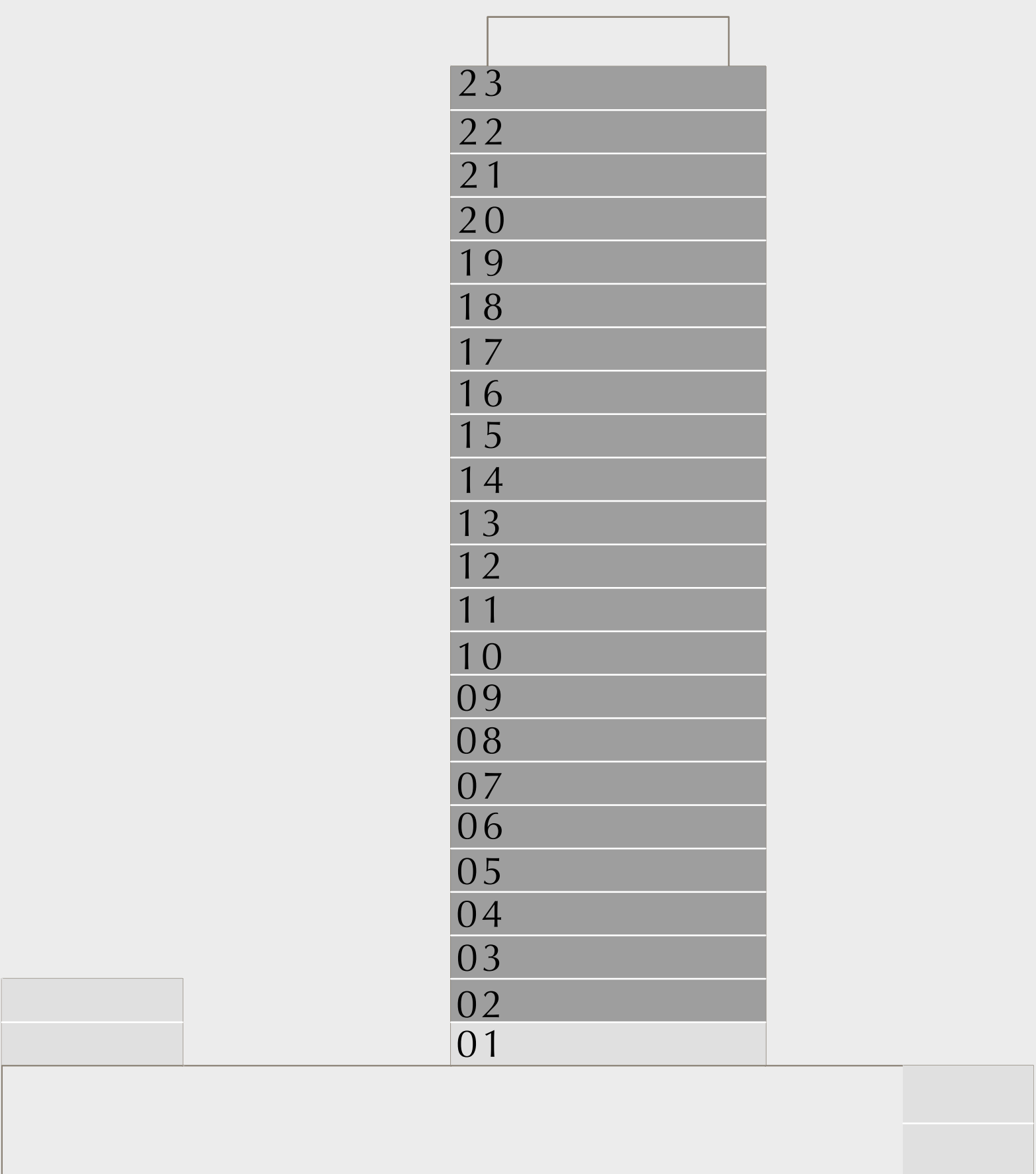
SUITE AREA	917.73 SQ.FT.	85.26 SQ.M.
BALCONY AREA	53.60 SQ.FT.	4.98 SQ.M.
TOTAL AREA	971.33 SQ.FT.	90.24 SQ.M.

KEY PLAN
LEVELS 02-23

PARK SIDE



KEY SECTION



N

BOULEVARD

Disclaimer : All dimensions are in imperial and metric, and measured from finish to finish excluding construction tolerances. 2. All materials, dimensions, and drawings are approximate only. 3. Information is subject to change with or without notice at developer's absolute discretion. 4. Actual area may vary from the stated area. 5. Drawings not to scale. 6. All images used are for illustrative purposes only and do not represent the actual size, features, specifications, fittings, and finishes. 7. The developer reserves the right to make revisions / alterations, at its absolute discretion, without any liability whatsoever.

EMAAR