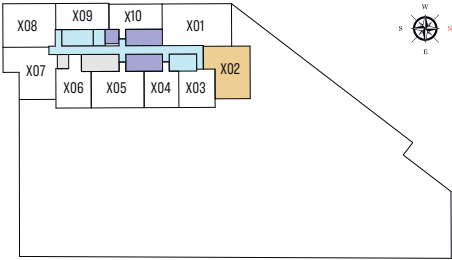


2 BEDROOM APARTMENT

TYPE A (with balcony)

TOTAL SALEABLE AREA

SUITE = 1,109.76 SQ.FT.
BALCONY = 107.21 SQ.FT.
TOTAL = 1,216.97 SQ.FT.



LEVEL 08-22 & 24-40

UNIT



List of unit numbers with this unit plan:

VIEWS

Downtown, Burj Khalifa
802

Downtown, Burj Khalifa, Dubai Canal (Business Bay)
902

Downtown, Burj Khalifa, Dubai Canal (Business Bay), Ras Al Khor
1002, 1102, 1202, 1302, 1402, 1502, 1602, 1702, 1802, 1902, 2002, 2102, 2202
2402, 2502, 2602, 2702, 2802, 2902, 3002, 3102, 3202, 3302, 3402, 3502, 3602, 3702, 3802, 3902, 4002



2 BEDROOM APARTMENT

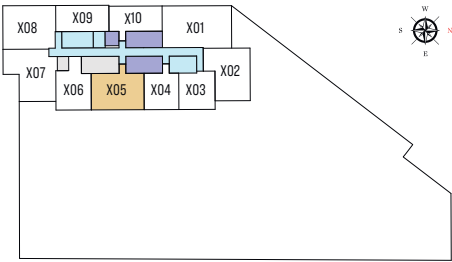
TYPE B (with balcony)

TOTAL SALEABLE AREA

SUITE = 989.31 SQ.FT.

BALCONY = 117.47 SQ.FT.

TOTAL = 1,106.78 SQ.FT.



LEVEL 08-22 & 24-40

UNIT



List of unit numbers with this unit plan:

VIEWS

Amenities, Hartland
805, 905

Amenities, Hartland, Ras Al Khor
1005, 1105, 1205, 1305, 1405, 1505, 1605, 1705, 1805, 1905, 2005, 2105, 2205
2405, 2505, 2605, 2705, 2805, 2905, 3005, 3105, 3205

Amenities, Hartland, Ras Al Khor, Dubai Canal (Business Bay)
3305, 3405, 3505, 3605, 3705, 3805, 3905, 4005

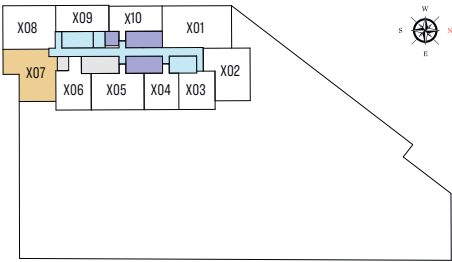


2 BEDROOM APARTMENT

TYPE C (with balcony)

TOTAL SALEABLE AREA

SUITE = 1,168.85 SQ.FT.
BALCONY = 99.57 SQ.FT.
TOTAL = 1,268.42 SQ.FT.



LEVEL 08-22 & 24-40

UNIT



List of unit numbers with this unit plan:

VIEWS

Hartland
807, 907, 1007, 1107, 1207, 1307, 1407, 1507, 1607, 1707, 1807, 1907, 2007, 2107, 2207
2407, 2507, 2607, 2707, 2807, 2907, 3007, 3107, 3207, 3307, 3407, 3507, 3607, 3707, 3807

Hartland, Ras Al Khor
3907, 4007



2 BEDROOM APARTMENT

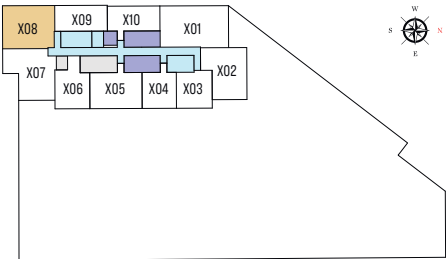
TYPE D (with balcony)

TOTAL SALEABLE AREA

SUITE = 1,166.81 SQ.FT.

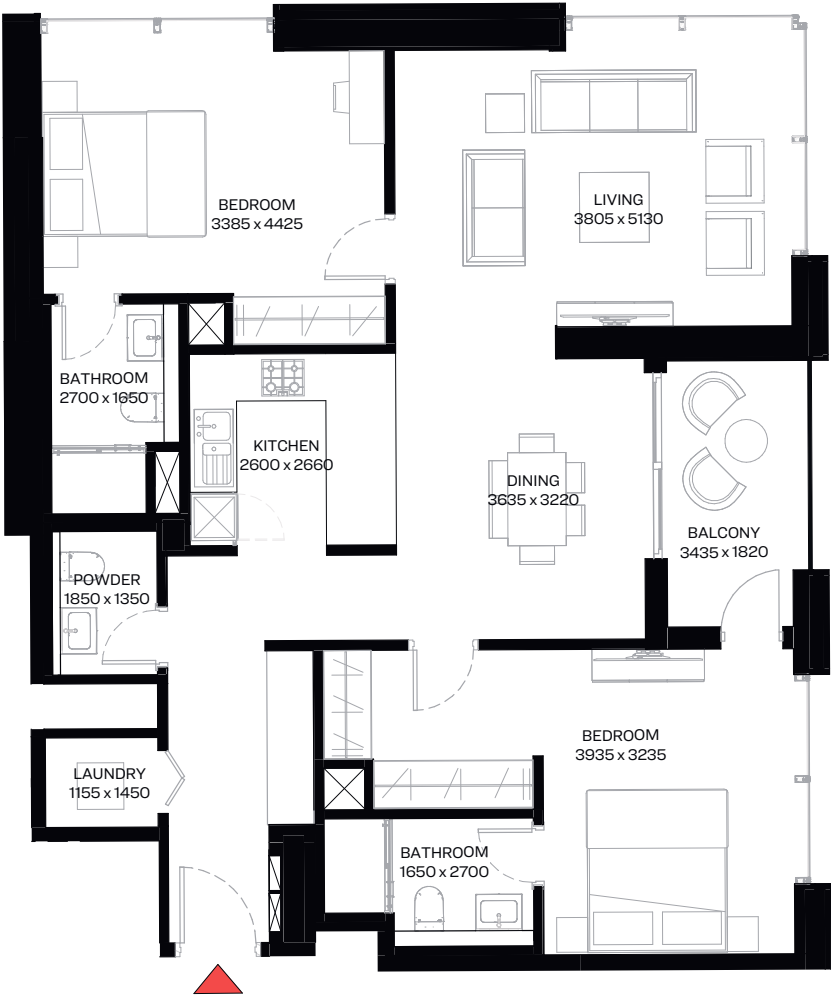
BALCONY = 80.62 SQ.FT.

TOTAL = 1,247.43 SQ.FT.



LEVEL 08-22 & 24-40

UNIT



List of unit numbers with this unit plan:

VIEWS

Downtown, Burj Khalifa, Hartland
808, 908, 1008, 1108, 1208, 1308, 1408, 1508, 1608, 1708, 1808, 1908, 2008, 2108, 2208,
2408, 2508, 2608, 2708, 2808, 2908, 3008, 3108, 3208, 3308, 3408, 3508, 3608
3708, 3808, 3908, 4008



Disclaimer: 1. Information is subject to change without notice, at developer's absolute discretion. 2. Drawings are not to scale. 3. All images used are for illustrative purpose only and do not represent the actual size, features, specifications 4. The developer reserves the right to make revisions/ alterations, at its absolute discretion, without any liability whatsoever.